

Analysis and Numerical Approximation of PDEs

September 08-10, 2014

ETH Zurich

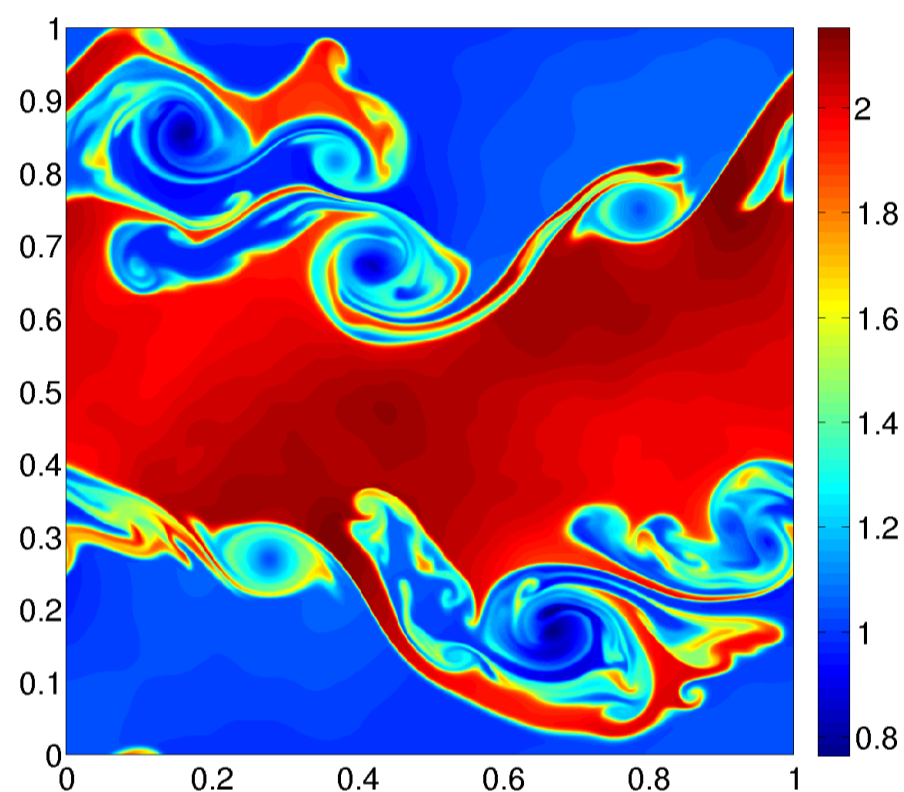
Conference Announcement



Organizer

Siddhartha Mishra SAM, ETH Zurich

Conference Theme



This conference will cover latest developments in the analysis and numerical approximation of nonlinear PDEs. The conference will honor Prof. Eitan Tadmor on his 60th birthday. All talks will be given by invited plenary speakers. There will be a poster session for interested participants.

Venue

ETH Zurich Main Building G-Floor, HG G5

Invited Speakers

R. Caflisch	UCLA
W. Dahmen	RWTH, Aachen
C. De Lellis	Zurich
U. S. Fjordholm	Trondheim
H. Holden	Trondheim
A. Kiselev	Rice
D. Kroener	Freiburg
A. Kurganov	Tulane
P. LeFloch	Paris VI
Y. Maday	Paris VI
S. Mallat	Ecole Polytechnique
P. Marcati	L' Aquila
P. Markowich	KAUST
B. Popov	Texas A&M
G. Russo	Catania
J. Tanner	Oxford
M. Vogelius	Rutgers

Registration

Online at
<http://www.sam.math.ethz.ch/woanapde/registration.php>

Contact

<http://www.sam.math.ethz.ch/woanapde/contact.php>
woanapde@math.ethz.ch

Deadlines

Registration open	Jan 20, 2014
Submission of Poster Abstracts	Jul 24, 2014
Notification of Acceptance of Posters	Aug 01, 2014
Deadline Registration	Aug 08, 2014

Sponsors

FIM
Forschungsinstitut für Mathematik



Seminar for Applied Mathematics **SAM**

ETH
Eidgenössische Technische Hochschule Zürich
Swiss Federal Institute of Technology Zurich